

Lamb Market: Situation and Outlook

Lamb Council and American Lamb Board and Policy
Forum

Denver, CO
January 27, 2017

James G. Robb
Director, LMIC

Website: www.lmic.info



LMIC
Livestock Marketing
Information Center

28 U.S. Land Grant Universities:



USDA Data Sources – NASS, AMS, FAS,
and ERS

Forecasts by – LMIC

6 USDA Members:

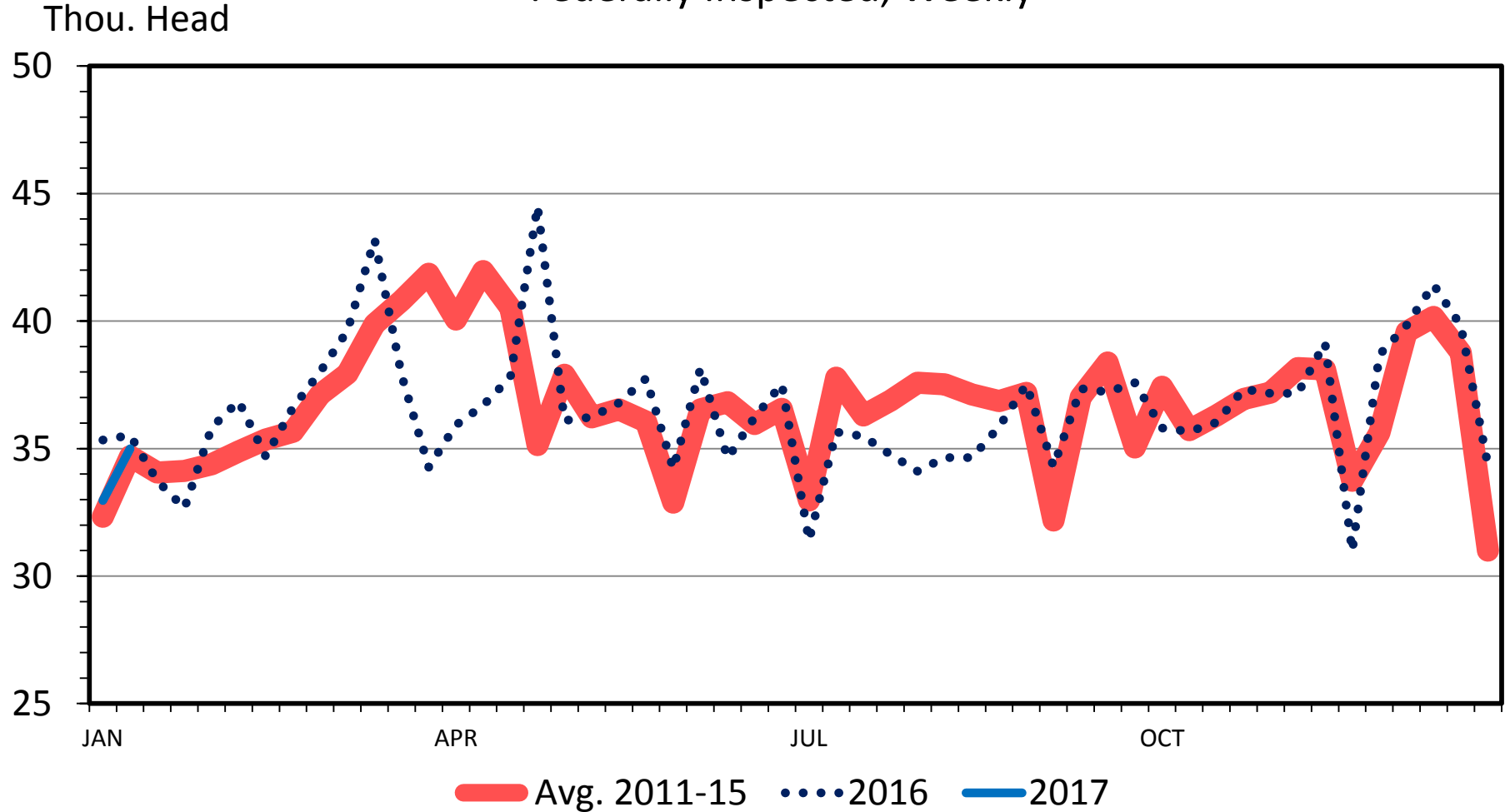
ERS	NASS
APHIS	WAOB
GIPSA	AMS

13 Associate Members:

- AFBF
- ASI**
- NCBA
- NPB
- CME-Group
- Canadian Consortium
- Noble Foundation
- CoBank
- TCFA
- CWB
- TCU
- NWFCS
- DLR

LAMB AND YEARLING SLAUGHTER

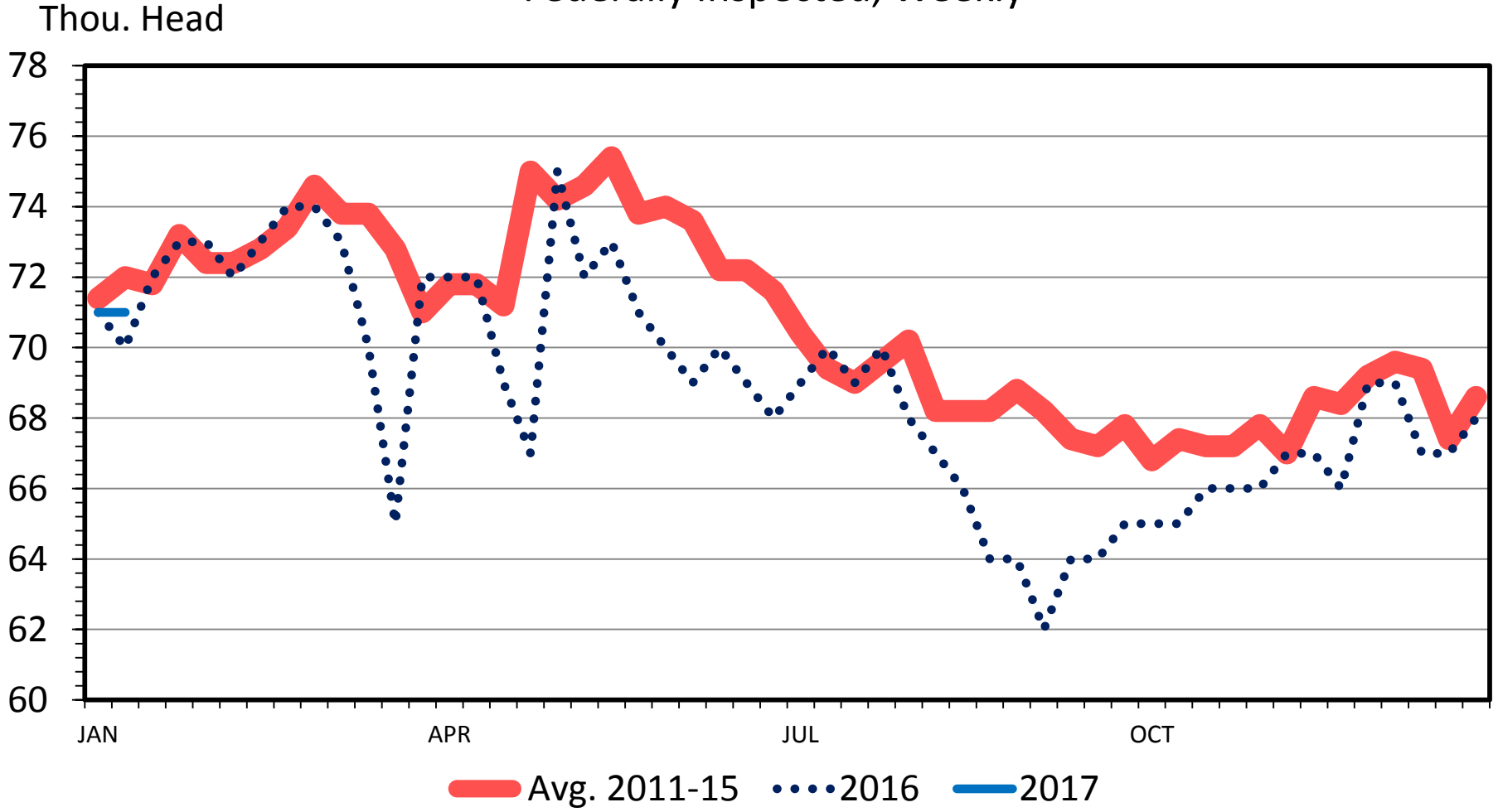
Federally Inspected, Weekly



Data Source: USDA-AMS & USDA-NASS

LAMB AND YEARLING DRESSED WEIGHT

Federally Inspected, Weekly

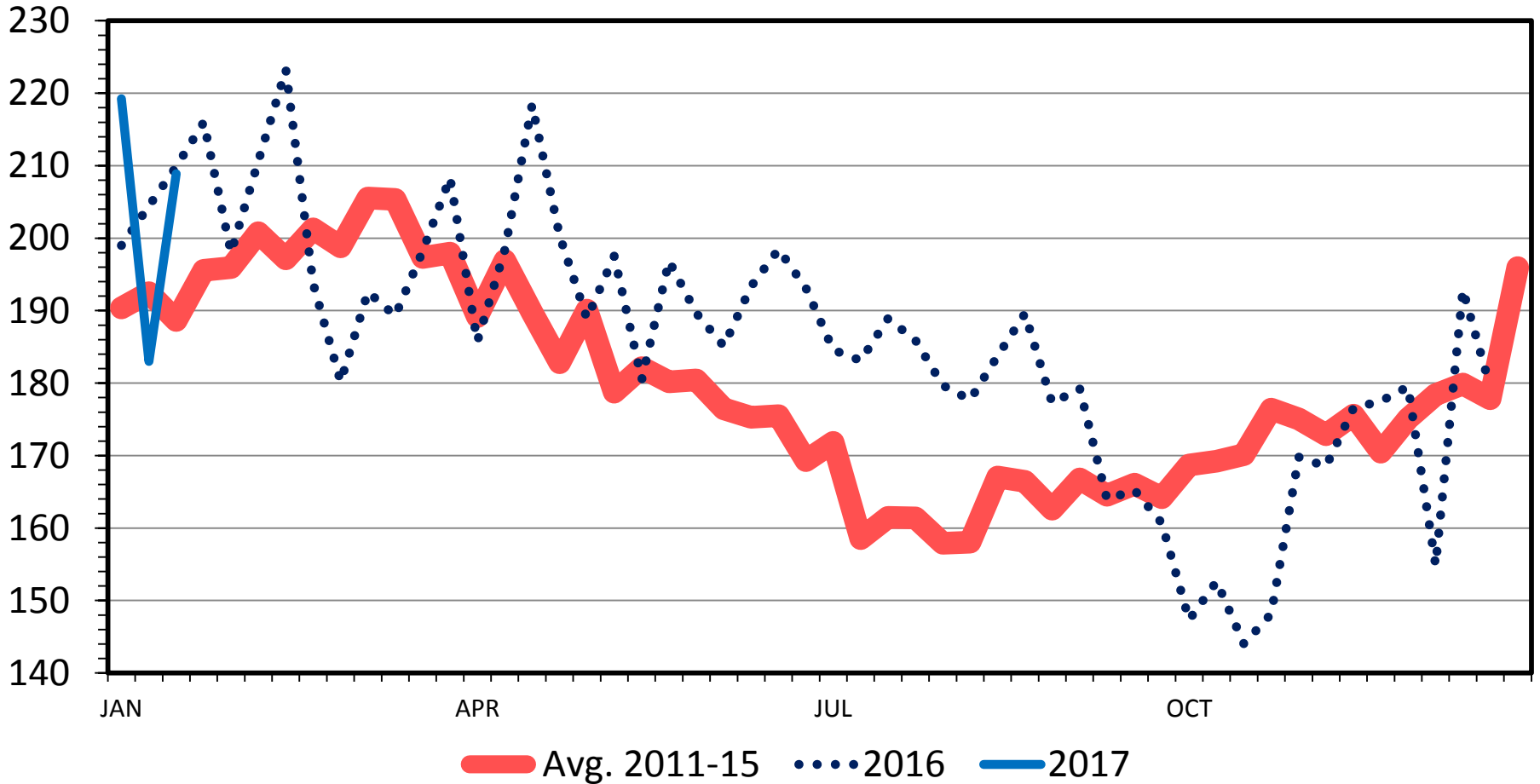


Data Source: USDA-AMS & USDA-NASS

FEEDER LAMB PRICES

3-Market Average; CO, TX & SD; Weekly

\$ Per Cwt.

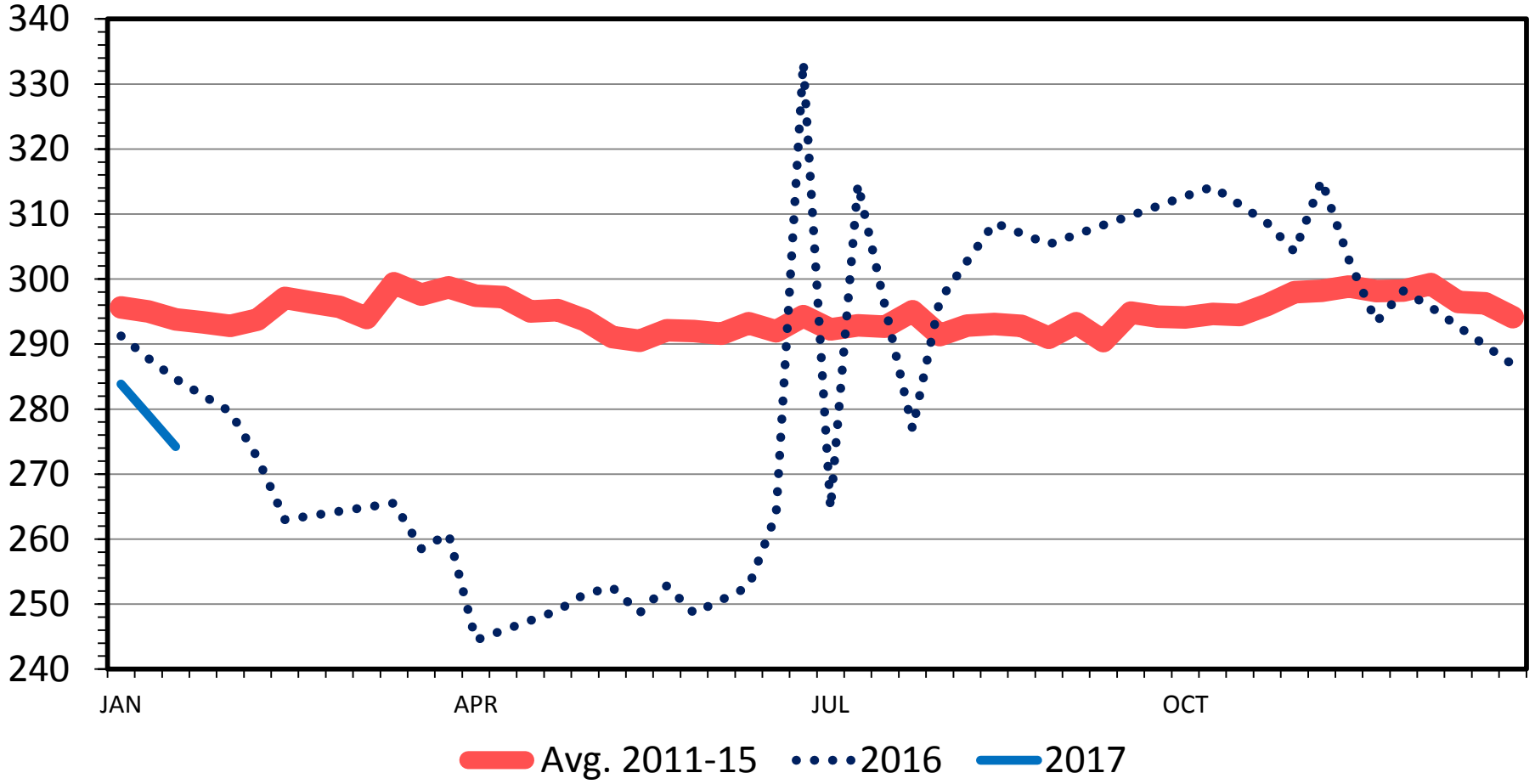


Data Source: USDA-AMS

SLAUGHTER LAMB PRICES

National Direct, Hot Carcass, Weekly

\$ Per Cwt.

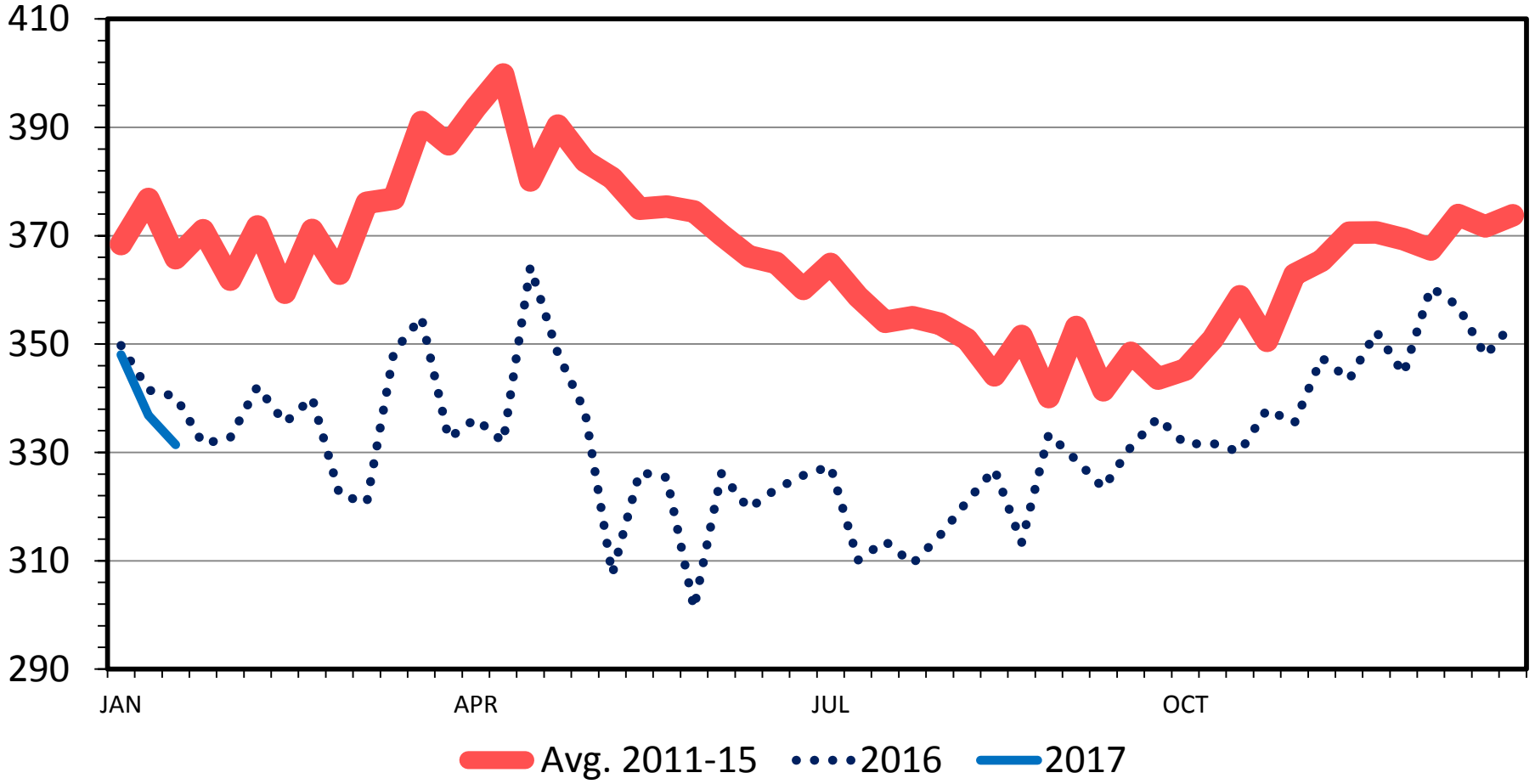


Data Source: USDA-AMS

BOXED LAMB SINGLE LEG PRICES

Trotter Off, 5 Day Rolling Average

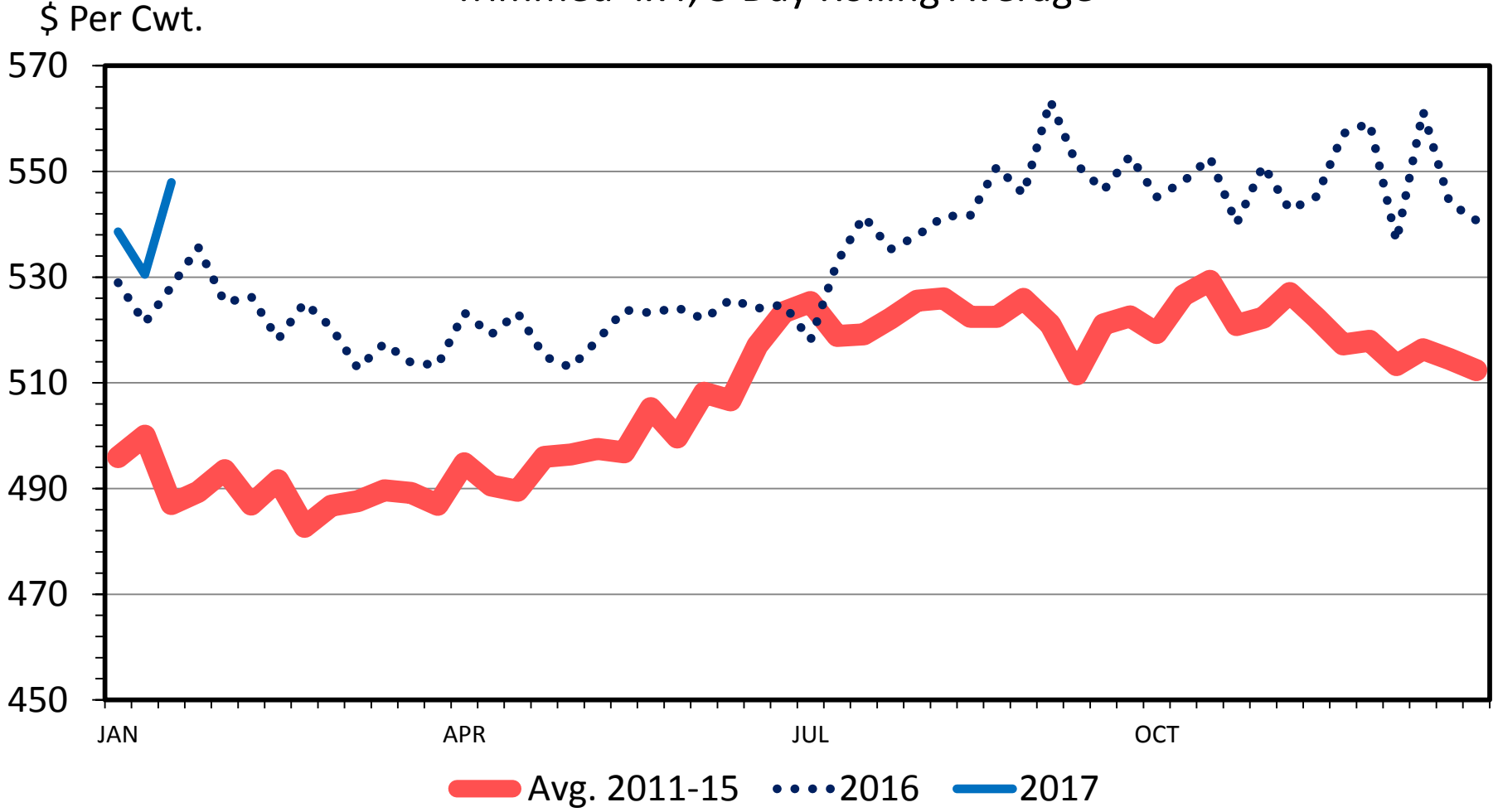
\$ Per Cwt.



Data Source: USDA-AMS

BOXED LAMB LOIN PRICES

Trimmed 4x4, 5 Day Rolling Average

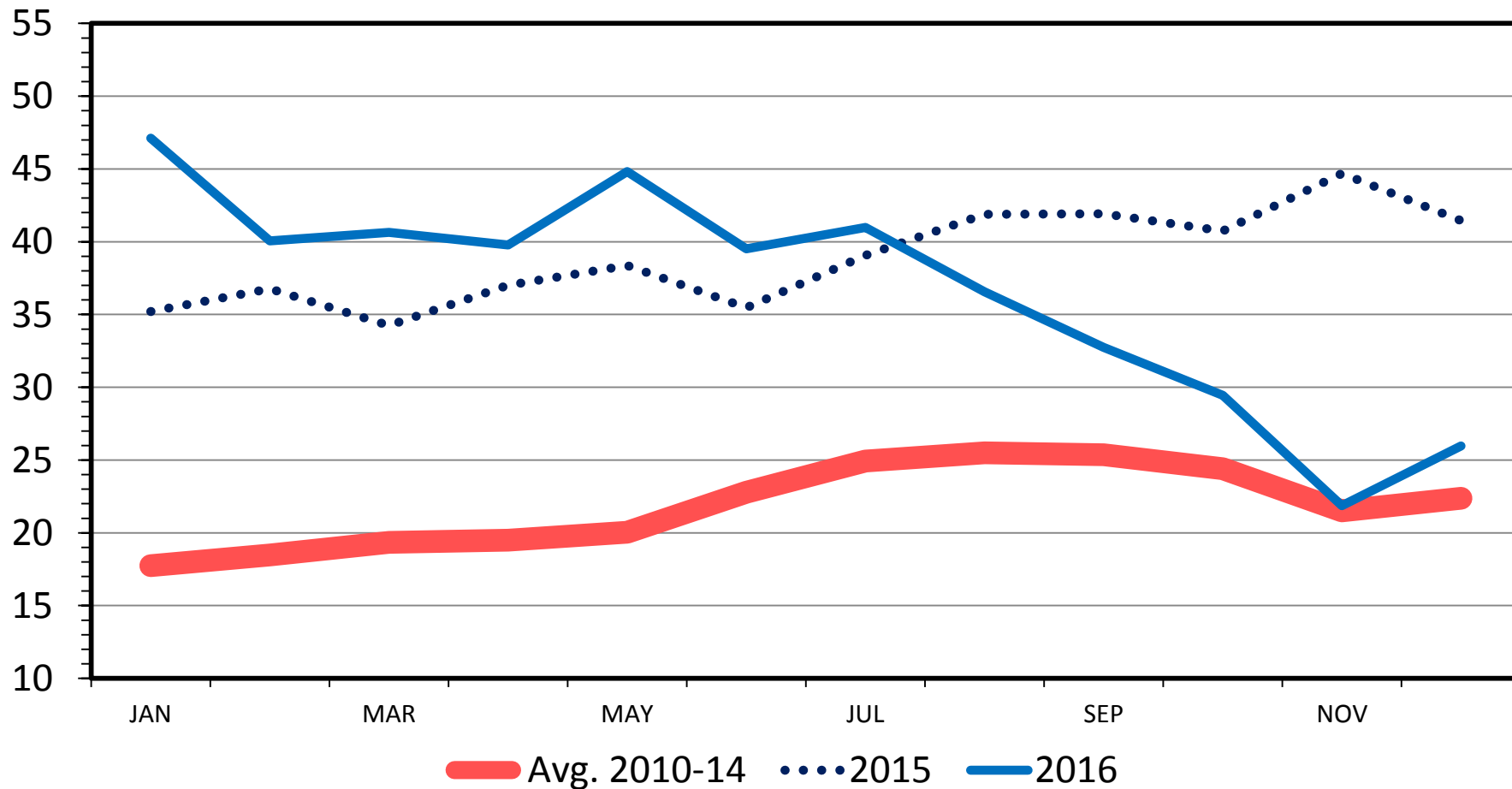


Data Source: USDA-AMS

LAMB AND MUTTON IN COLD STORAGE

Frozen, End of the Month

Mil. Pounds

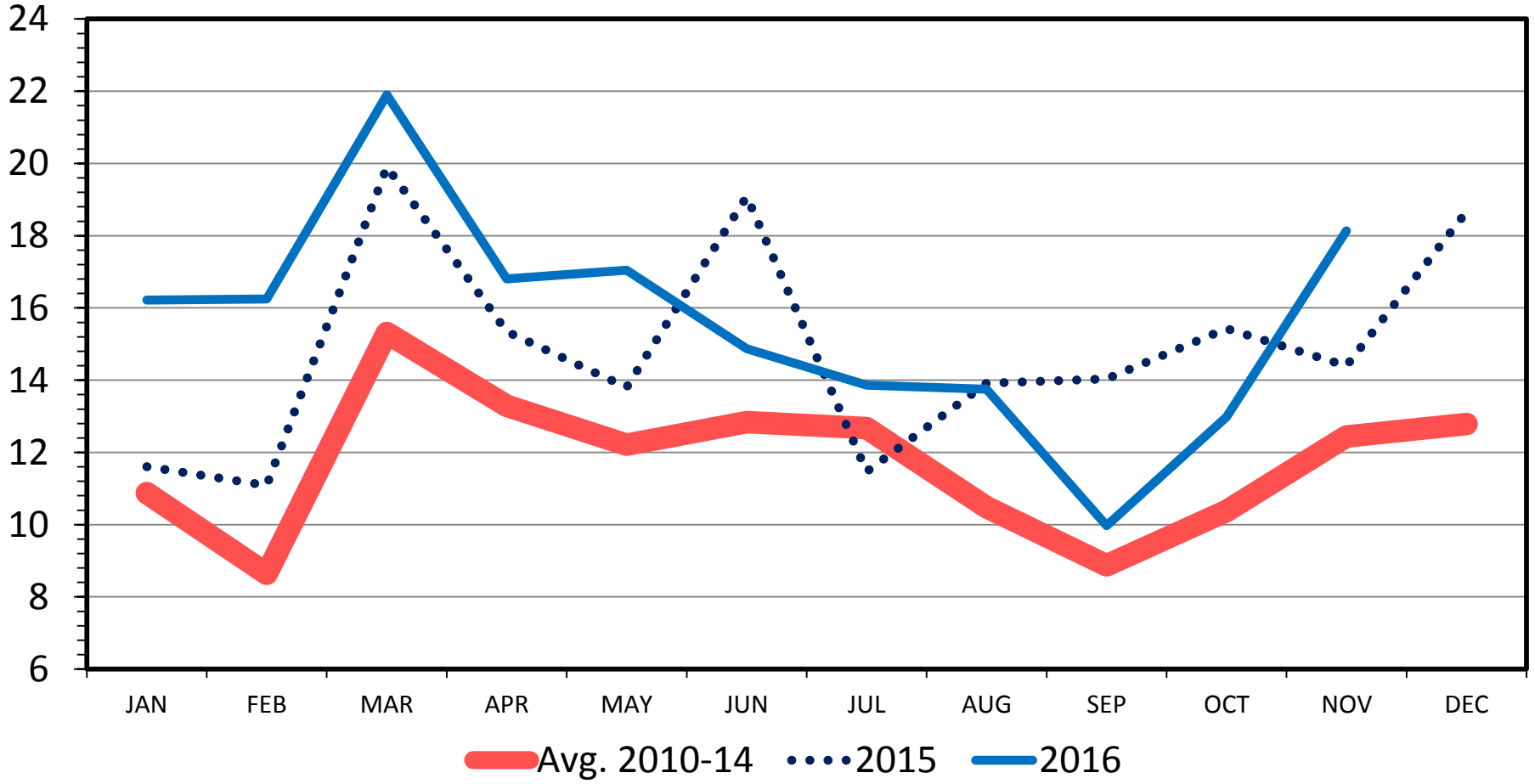


Data Source: USDA-NASS

US LAMB IMPORTS

Carcass Weight, Monthly

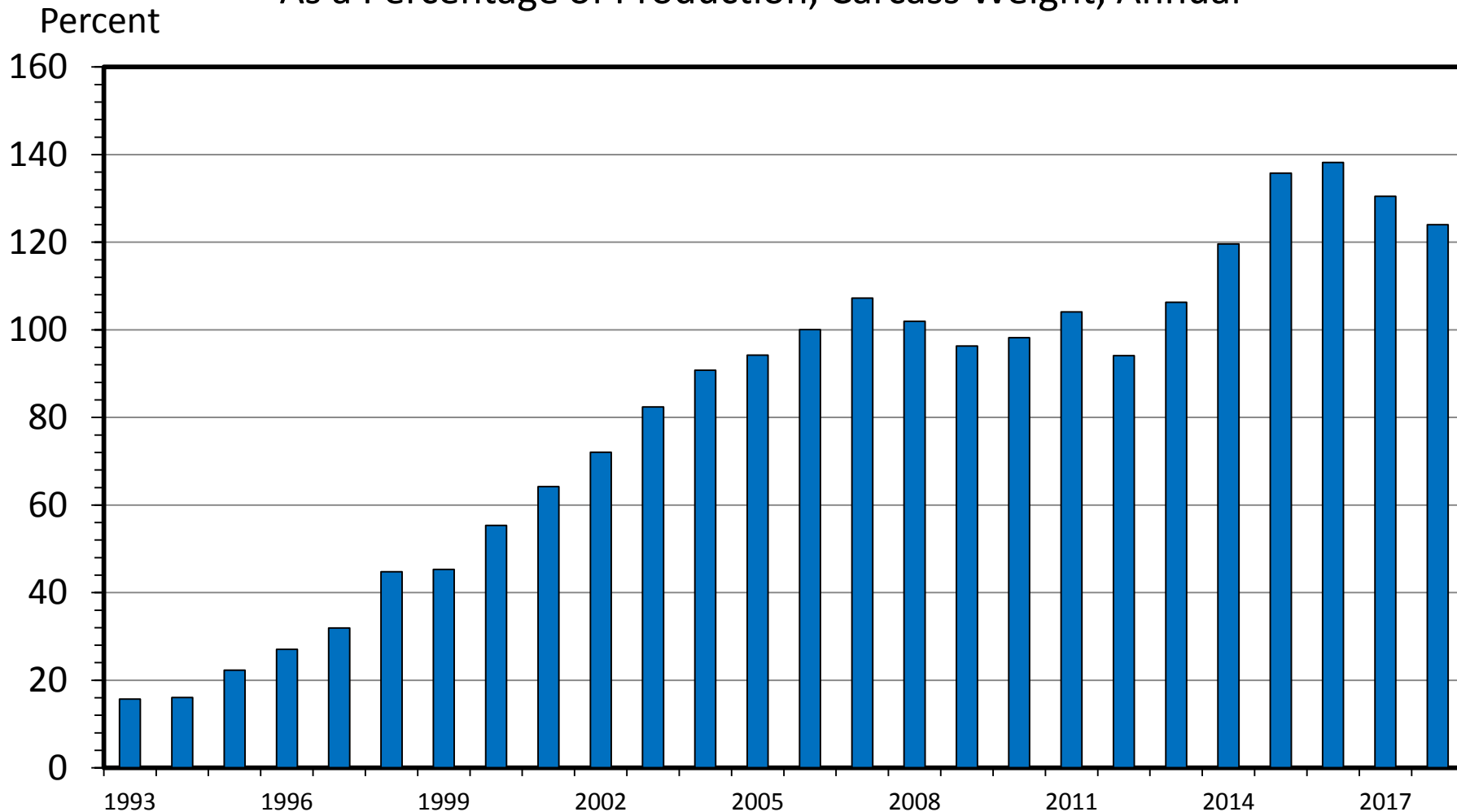
Mil. Pounds



Data Source: USDA-ERS & USDA-FAS

US LAMB AND MUTTON IMPORTS

As a Percentage of Production, Carcass Weight, Annual

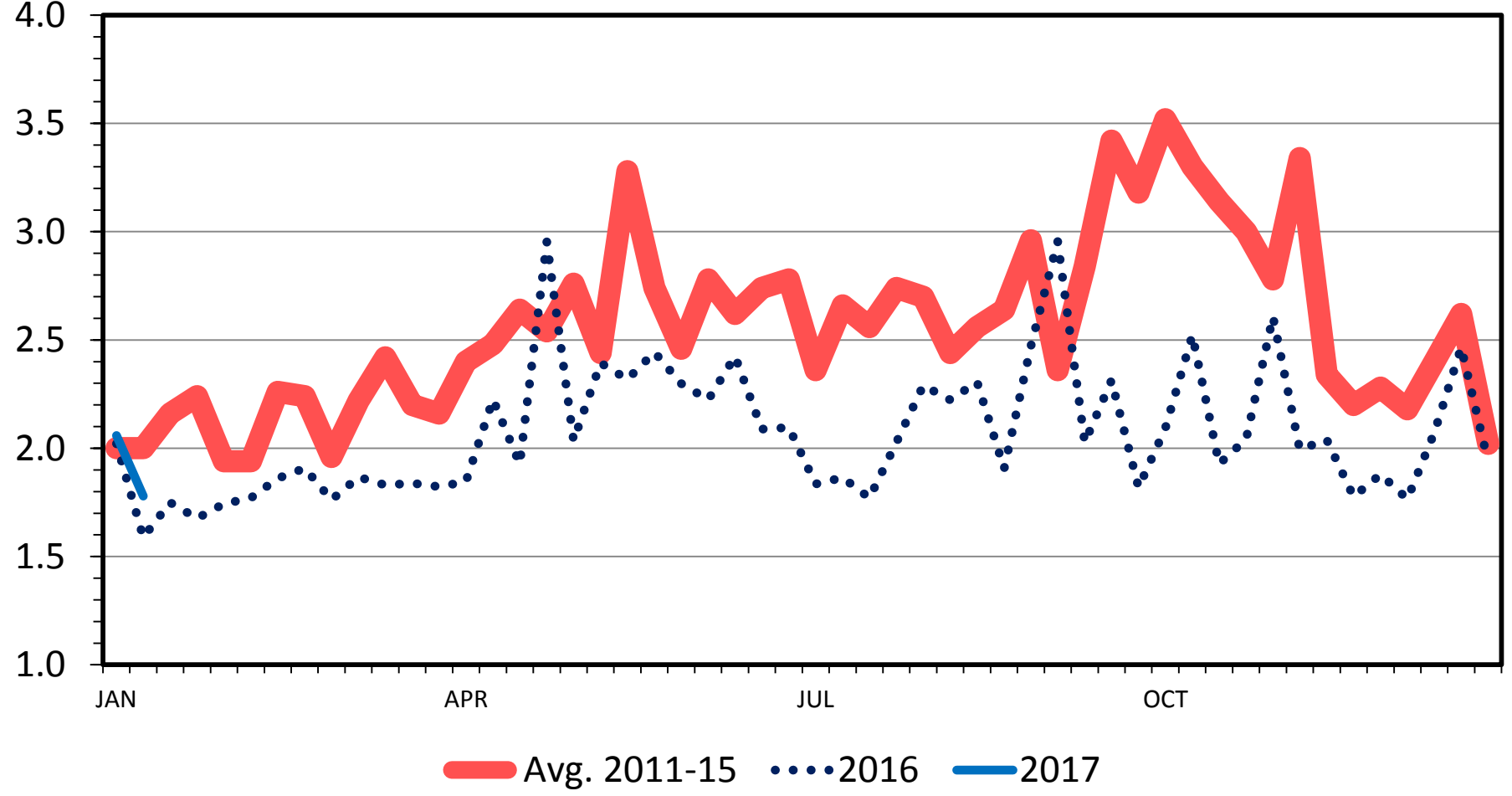


Data Source: USDA-ERS & USDA-FAS, Compiled & Analysis by LMIC

MATURE SHEEP SLAUGHTER

Federally Inspected, Weekly

Thou. Head

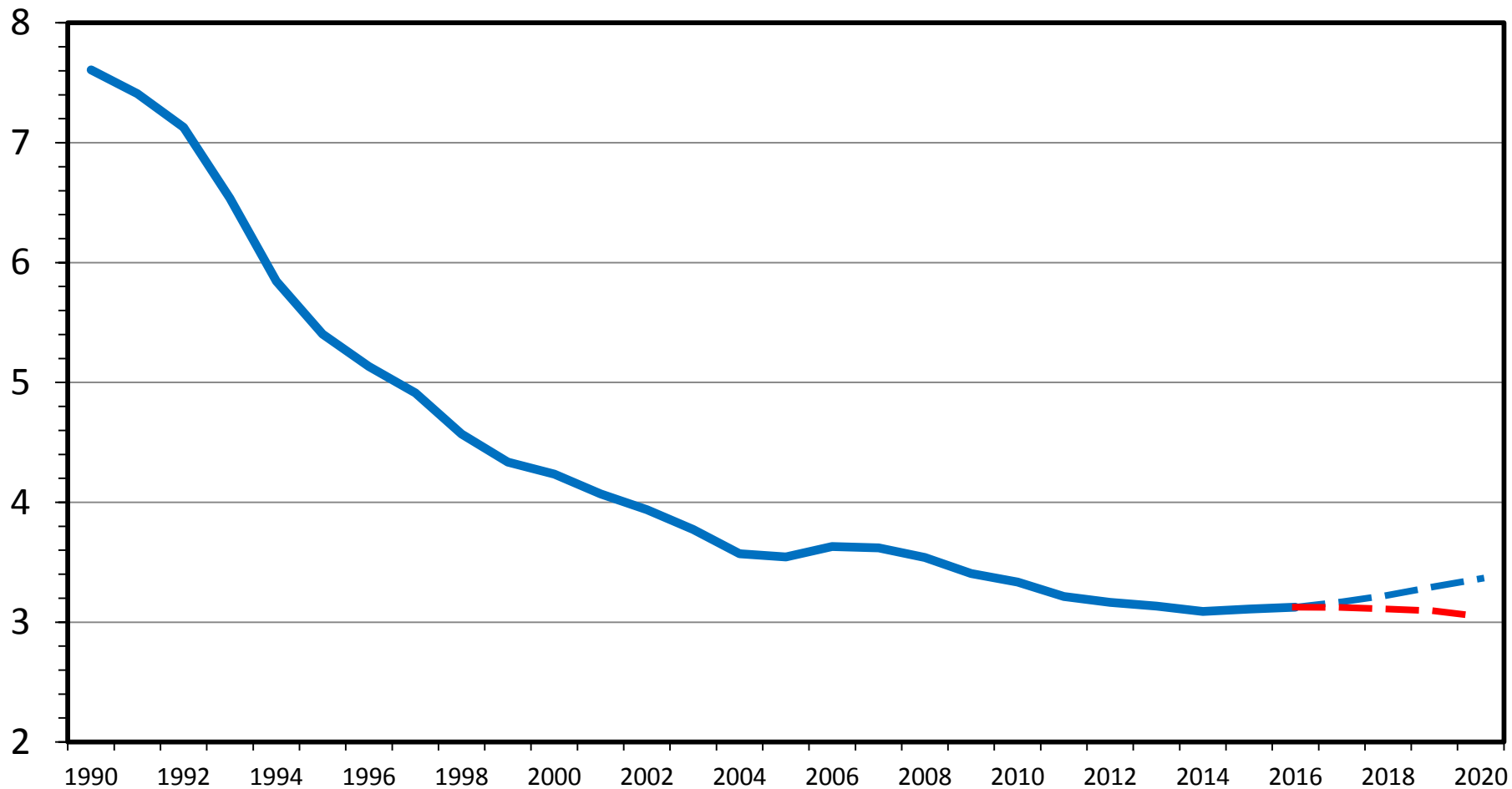


Data Source: USDA-AMS & USDA-NASS

BREEDING EWES 1 YEAR & OLDER

Projections, January 1, U.S., Annual

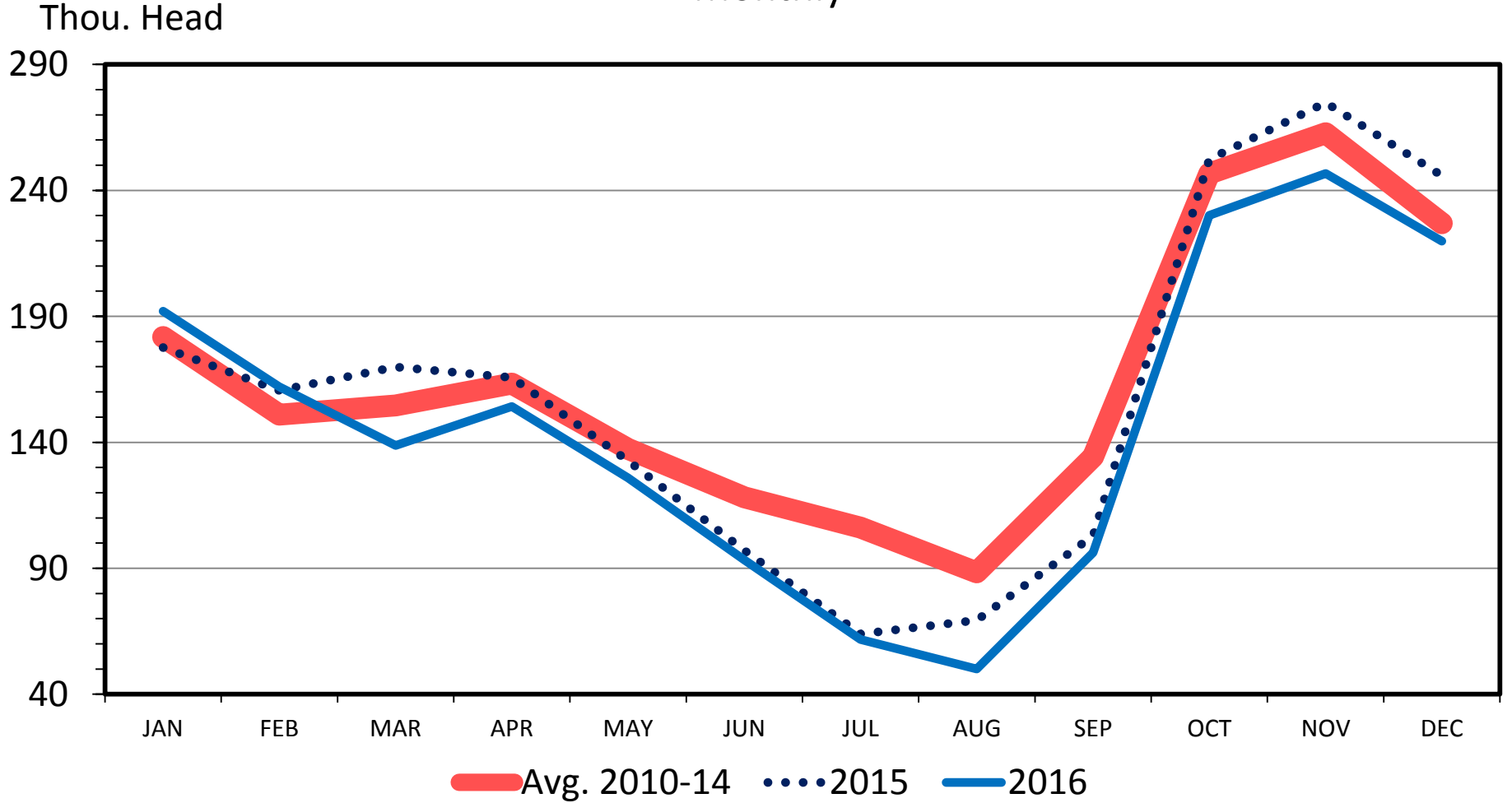
Mil. Head



Data Source: USDA-NASS, Forecasts by LMIC

COLORADO LAMBS ON FEED

Monthly

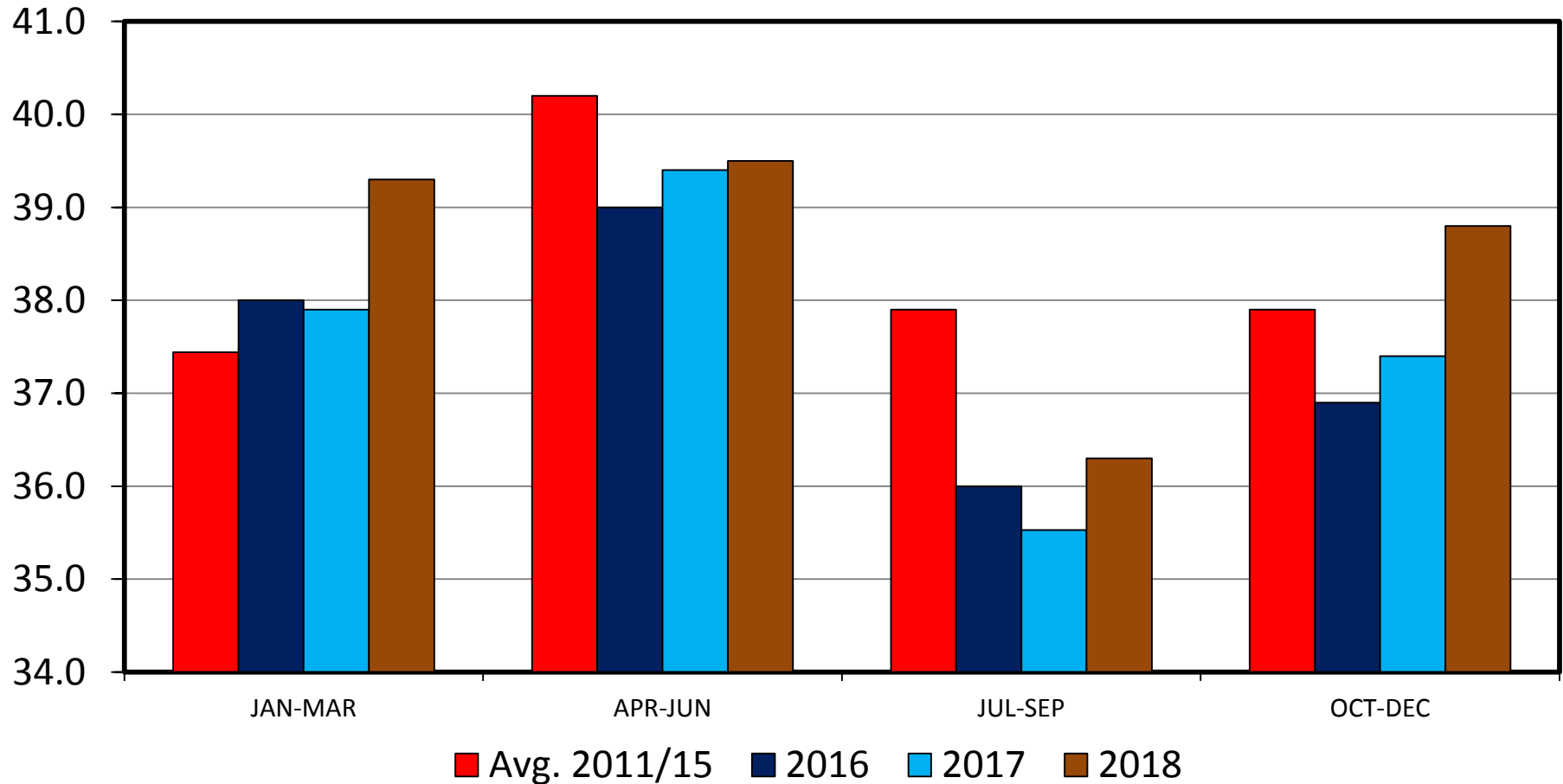


Data Source: USDA-AMS

COMMERCIAL LAMB AND MUTTON PRODUCTION

US, Quarterly

Mil. Pounds

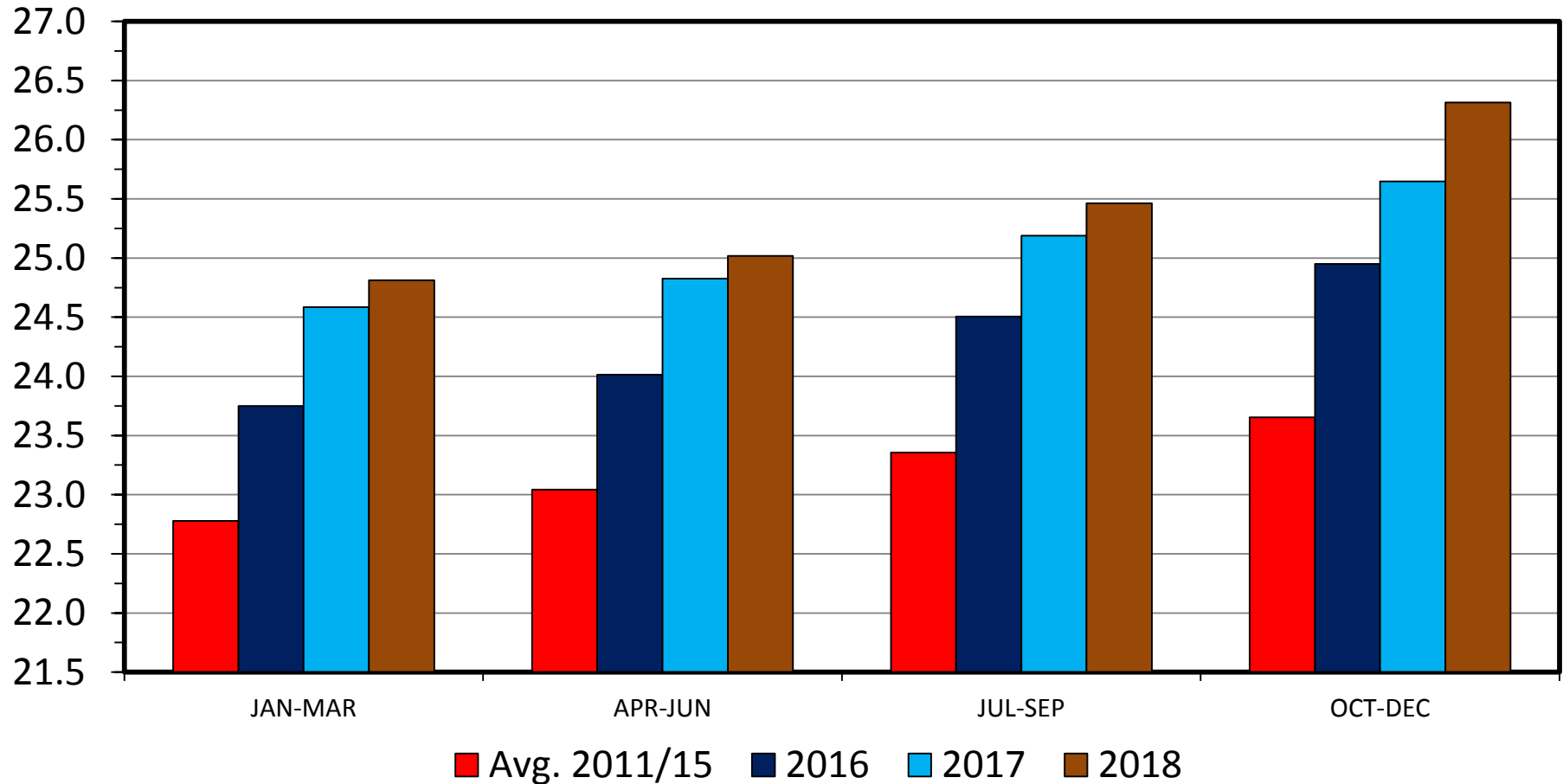


Data Source: USDA-NASS, Forecasts by LMIC

TOTAL RED MEAT & POULTRY PRODUCTION

US, Quarterly

Bil. Pounds



Data Source: USDA-NASS, Forecasts by LMIC

QUARTERLY COMMERCIAL SHEEP AND LAMB SLAUGHTER, PRODUCTION AND LAMB PRICES ^a

01/26/17

Year Quarter	Comm'l Slaughter	% Chg. from Year Ago	Average Dressed Weight	% Chg. from Year Ago	Comm'l Lamb Production	% Chg. from Year Ago	Sl. Lambs Natl. Direct Carc. Weight ^b	% Chg. from Year Ago	Fdr. Lamb 3-Market Avg 60-90 lbs ^c	% Chg. from Year Ago
	(1,000 Head)		(Lbs.)		(Mil. Lbs.)		(\$/Cwt.)		(\$/Cwt.)	
2015										
I	536	-0.4	70	1.2	37.5	0.8	305.98	2.2	208.09	-6.9
II	564	-7.4	69	-0.7	39.1	-8.0	287.94	1.5	195.80	0.5
III	556	-4.6	66	2.1	36.9	-2.6	296.94	0.5	186.07	-6.7
IV	568	-2.1	65	-1.6	36.9	-3.7	301.01	-5.9	179.56	-11.1
Year	2224	-3.7	68	0.2	150.4	-3.5	297.97	-0.6	192.38	-6.1
2016										
I	543	1.3	70	0.0	38.0	1.3	270.40	-11.6	201.39	-3.2
II	570	1.1	68	-1.3	39.0	-0.3	257.75	-10.5	193.37	-1.2
III	557	0.2	65	-2.6	36.0	-2.4	297.59	0.2	178.34	-4.2
IV	564	-0.7	65	0.7	36.9	-0.0	300.29	-0.2	166.86	-7.1
Year	2234	0.4	67	-0.8	149.9	-0.3	281.51	-5.5	184.99	-3.3
2017										
I ^d	549	1.1	69	-1.4	37.9	-0.3	274-279	2.3	169-177	-14.1
II ^e	587	3.1	67	-2.1	39.4	0.9	276-282	8.2	173-182	-8.2
III	557	0.0	64	-1.3	35.5	-1.3	283-289	-3.9	170-180	-1.9
IV	574	1.8	65	-0.4	37.4	1.3	276-284	-6.8	162-173	0.4
Year	2267	1.5	66	-1.3	150.2	0.2	277-283	-0.4	169-178	-6.7
2018										
I	564	2.8	70	0.9	39.3	3.7	279-287	2.4	170-182	1.7
II	585	-0.5	68	0.8	39.5	0.3	279-288	1.6	173-185	0.8
III	564	1.3	64	0.8	36.3	2.1	281-291	0.0	170-184	1.1
IV	591	3.1	66	0.6	38.8	3.7	278-289	1.3	164-179	2.4
Year	2304	1.6	67	0.8	153.8	2.4	279-289	1.3	169-183	1.4

a/ Totals may not add due to rounding.

d/ Estimated quarter

b/ Slaughter lamb prices are formula purchases on a dressed weight basis.

e/ Forecasted quarters

c/ Feeder Lamb Prices are a three market (CO, SD, & TX) average; live weight basis.

Sources: Livestock Slaughter - USDA Publications: Lamb Prices - USDA Livestock Market News: Forecasts - LMIC Projections



Thank You!