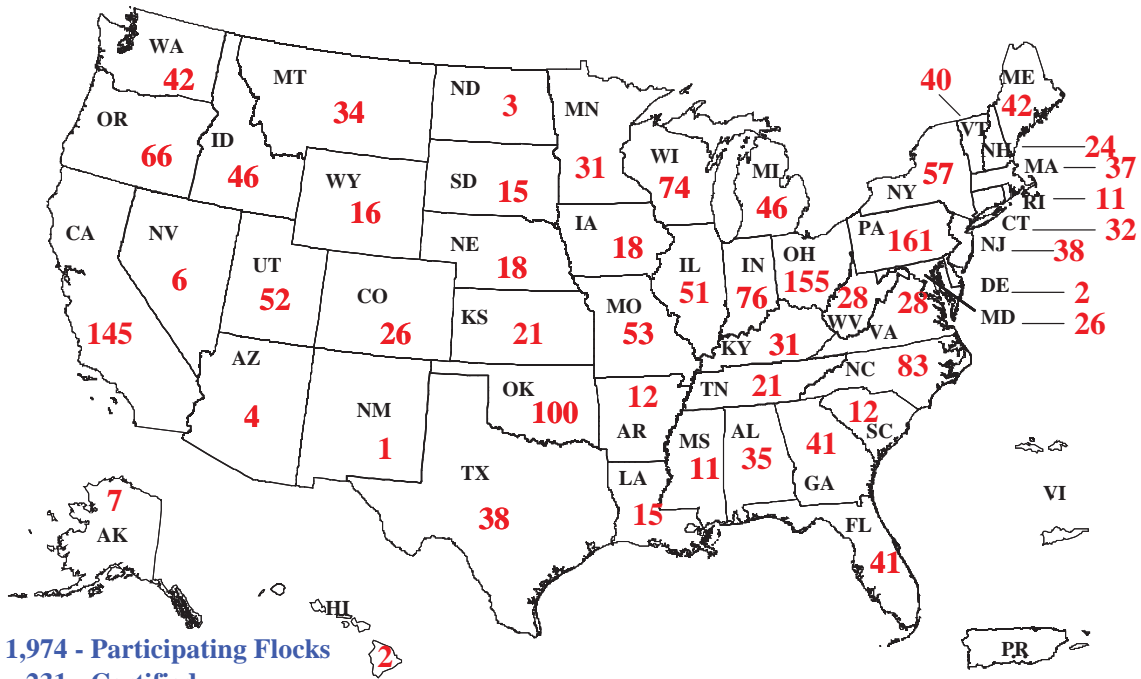


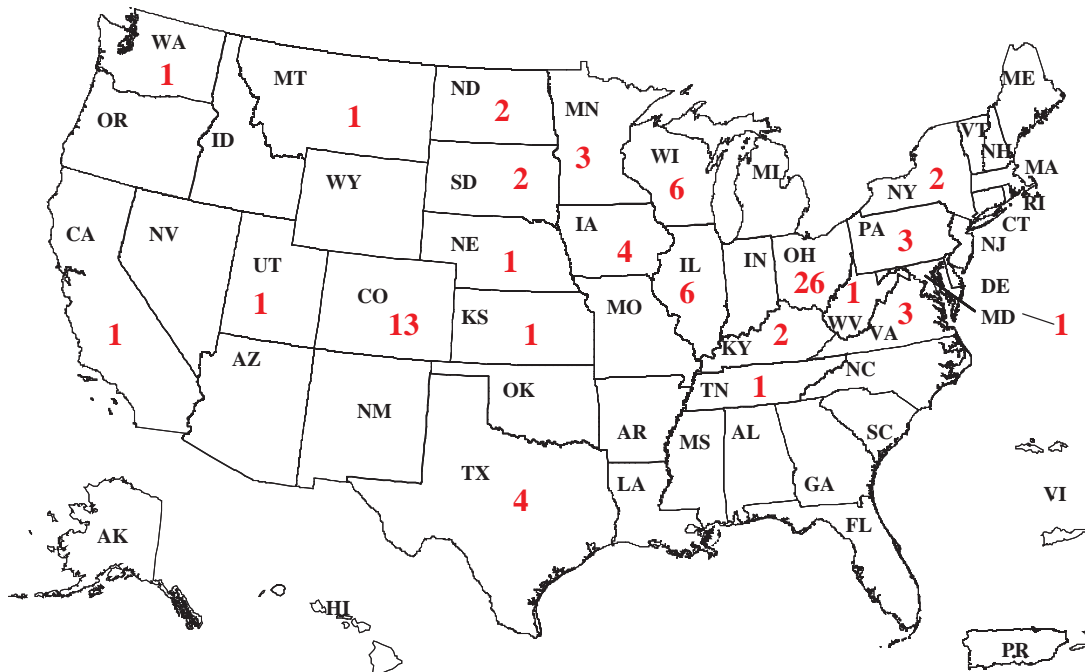
Scrapie Flock Certification Program Participating Flocks *as of February 28, 2006*



1,974 - Participating Flocks
231 - Certified
1,740 - Complete Monitored
3 - Selective Monitored



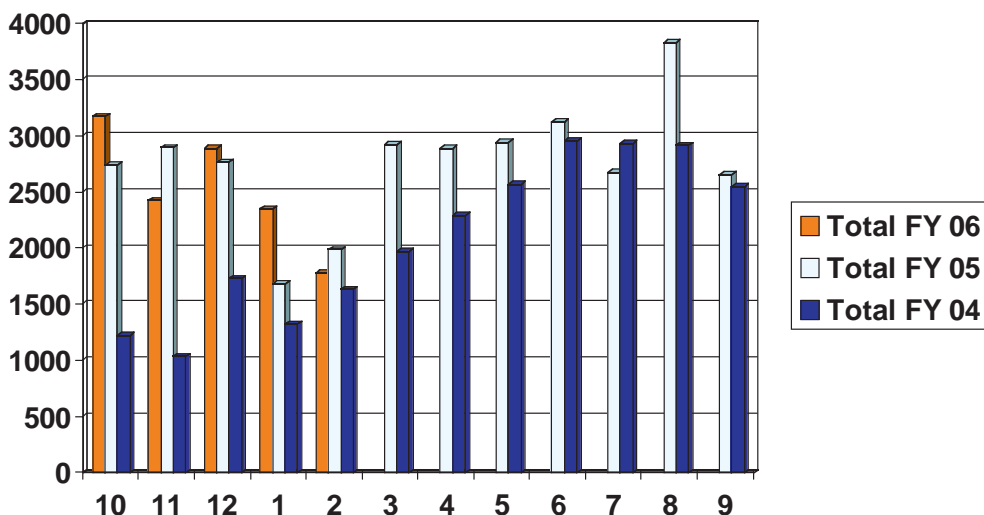
Scrapie Infected and Source Flocks *as of February 28, 2006*



Total Infected Flocks = 85



Slaughter Surveillance Samples Collected by Month for each Fiscal Year *FY 2004 to FY 2006*



The Animal and Plant Health Inspection Service's goal is to collect 4,000 slaughter surveillance samples each month from around the United States.

Regulatory Scrapie Slaughter Surveillance (RSSS) Statistics *through Feb. 28, 2006*

As of April 1, 2003:	In FY2006:	In Feb. 2006:
76,927 samples collected 231 NVSL confirmed positive 91 plants participating	13,078 samples collected 15 NVSL confirmed positive	1,784 samples collected 3 NVSL confirmed positive

Web Sites Dedicated to the Eradication of Scrapie

Iowa Department of Agriculture and Land Stewardship
<http://www.agriculture.state.ia.us/animalindustry.htm>

Animal and Plant Health Inspection Service
www.aphis.usda.gov/vs/na/na/na/scrapie

American Veterinary Medical Association
<http://www.avma.org/onlnews/javma/may02/s050102g.asp>

Scrapie QuickPlace
<https://qp01.aphis.usda.gov/QuickPlace/scrapie/Main.nsf?OpenDatabase>
*State and federal employees can access this password-protected site by e-mailing
Susan.E.Ledford@APHIS.USDA.gov to receive a password.*



American Sheep Industry Association
www.sheepusa.org