

SCRAPIE: ERADICATE IT

The sheep industry's scrapie eradication efforts.



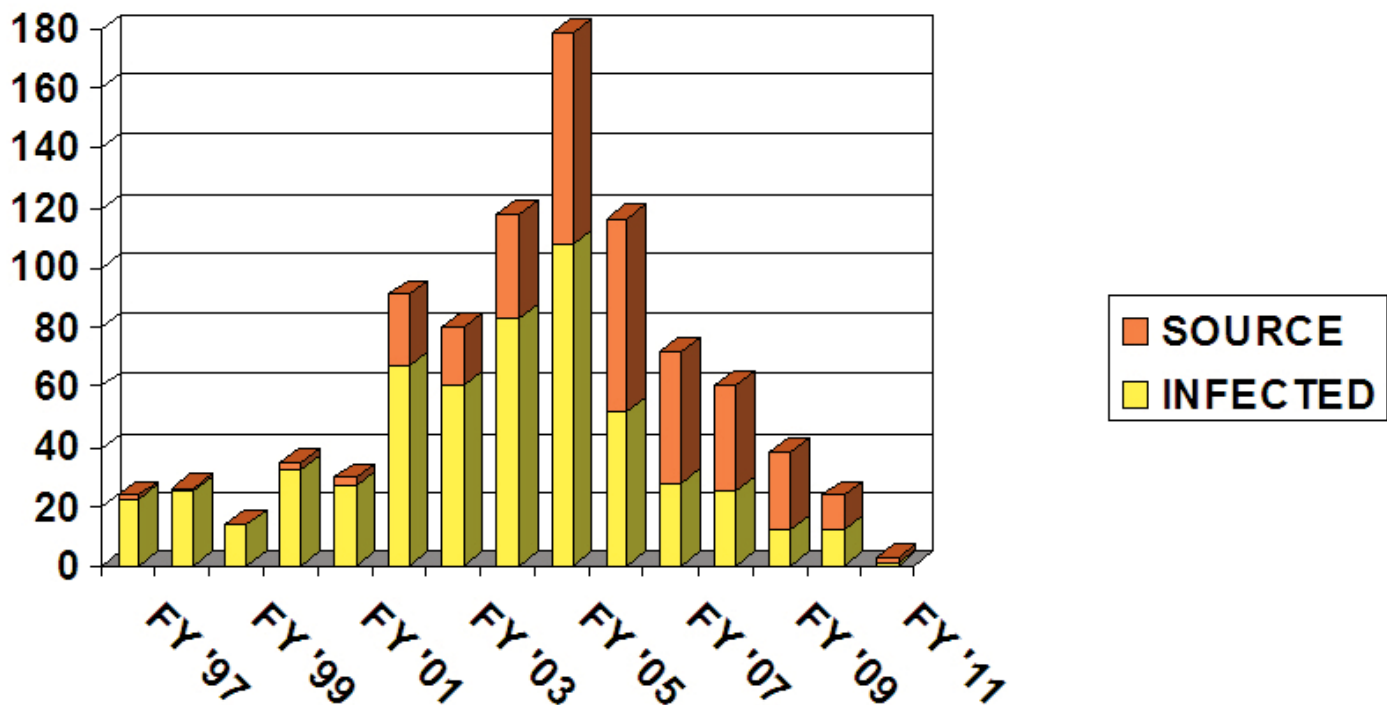
December 2010

The goal of the American Sheep Industry Association (ASI) and the U.S. sheep industry is to eradicate scrapie from our borders by 2017. In addition, it is the objective to have the World Organization for Animal Health, OIE, declare the United States scrapie free. This quarterly publication is created specifically for those of you in the field who are also working to achieve this goal.

This newsletter brings together, into one spot, current information from all 50 states, as well as from the U.S. Department of Agriculture and any other organization providing scrapie news, and reports it back to the field.

If you have first-hand accounts that you believe would be relevant for others to read or have information that you would like included in this newsletter, please let us know at becky@sheepusa.org.

Infected and Source Flocks New Statuses by Year FY 1997 – 2011*



*Through November 30, 2010

National Scrapie Eradication Program Update

The United States is well on its way to eradicating classical scrapie. Hard work by producers, the states and the U.S. Department of Agriculture (USDA) have yielded impressive results. This cooperative effort has resulted in a substantial decrease in the prevalence of classical scrapie and the number of new infected flocks.

The percent of black-faced sheep found positive at slaughter has decreased by 90 percent since the initiation of slaughter surveillance in FY 2003.

The number of new infected and source flocks identified during the fiscal year (FY) dropped 27 percent from 38 for FY 2009 to 24 for FY 2010. In FY 2011, three flocks have been designated infected or source as of Nov. 30.

There were 45,590 slaughter surveillance samples collected for FY 2010. Twenty of these sheep were confirmed positive for classical scrapie by the National Veterinary Services Laboratories. Seventeen of these sheep were black-faced and two were mottle-faced. As of Nov. 30, four cases of classical scrapie have been reported in FY 2011. No goats were positive.

Participation in the Scrapie Flock Certification Program (SFCP) continues to be a positive for the industry. Seedstock producers interested in exporting sheep or goats should consider enrolling their flocks in the export category of SFCP.

Producers are reminded that at this point in the eradication process, it is more crucial than ever to be aware of the signs of scrapie, to regularly monitor their flocks, to make sure sheep and goats are properly identified with official tags when moved and to promptly report any suspected case of scrapie to the state veterinarian's office or the Veterinary Services area office. Reporting is the right thing to do to protect the national flock. Suspect animals can be reported by calling toll free at 1-866-873-2824.

Producers can prevent scrapie by maintaining a flock/herd closed to female additions, increasing genetic resistance and/or only purchasing ewes that are genetically resistant or from certified scrapie free flocks/herds.

Scrapie Flock Certification Program (SFCP) Standards being Revised

In 2010, a committee comprised of sheep and goat producers participating in the Scrapie Flock Certification Program (SFCP), field regulatory personnel involved in the Scrapie Program and the national scrapie program staff began drafting a revision to the SFCP Standards.

The proposed revisions include increasing the age of suspect and export category animals required to be tested from 14 to 18 months in alignment with OIE standards, clarifying that flexibility exists in how State Scrapie Boards may be formed and in how they function, clarifying language that producers or field personnel identified as confusing and changing the format to make navigation through the standards easier for participants and field personnel.

The revision will also incorporate the changes made July 9, 2009 through replacement of Part III.A.2.i , Standards for Export Monitored Flocks, page 17 of the current 2007 standards.

Publication of the revised SFCP Standards is anticipated in fiscal year 2011. Once available, copies of the revised standards will be disseminated to all SFCP participants, Veterinary Services Area Offices and State Animal Health Officials.

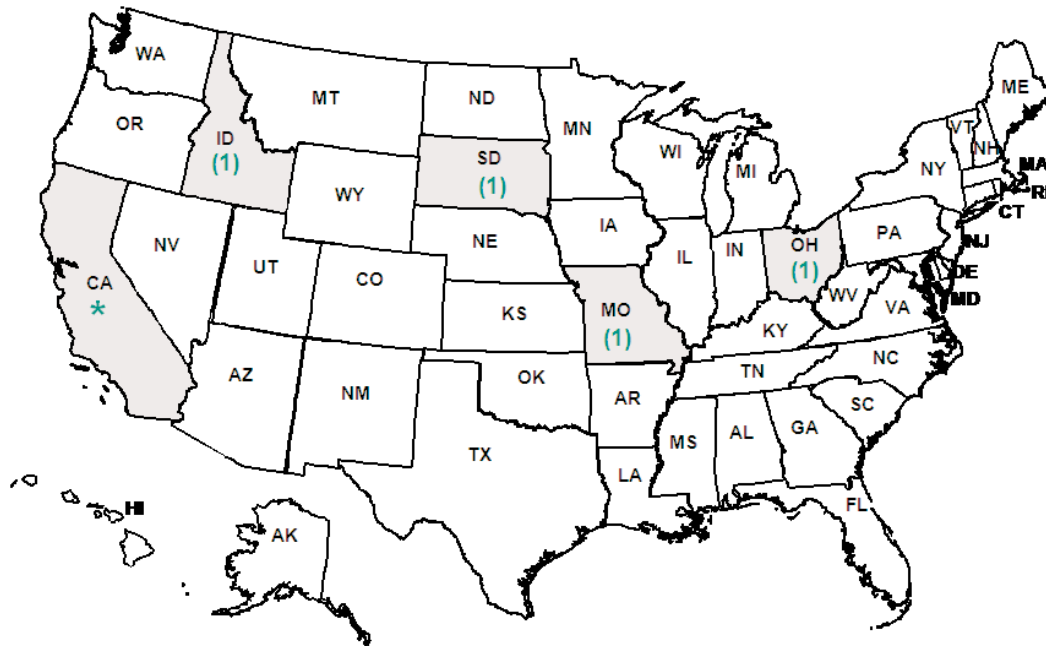
Animals Sampled for Scrapie Testing

Sheep and Goats

As of November 30, 2010

6,872 animals have been sampled for scrapie testing: 6,053 RSSS; 417 regulatory field cases; and 402 regulatory live animal biopsies.

Scrapie Confirmed Cases in FY 2011

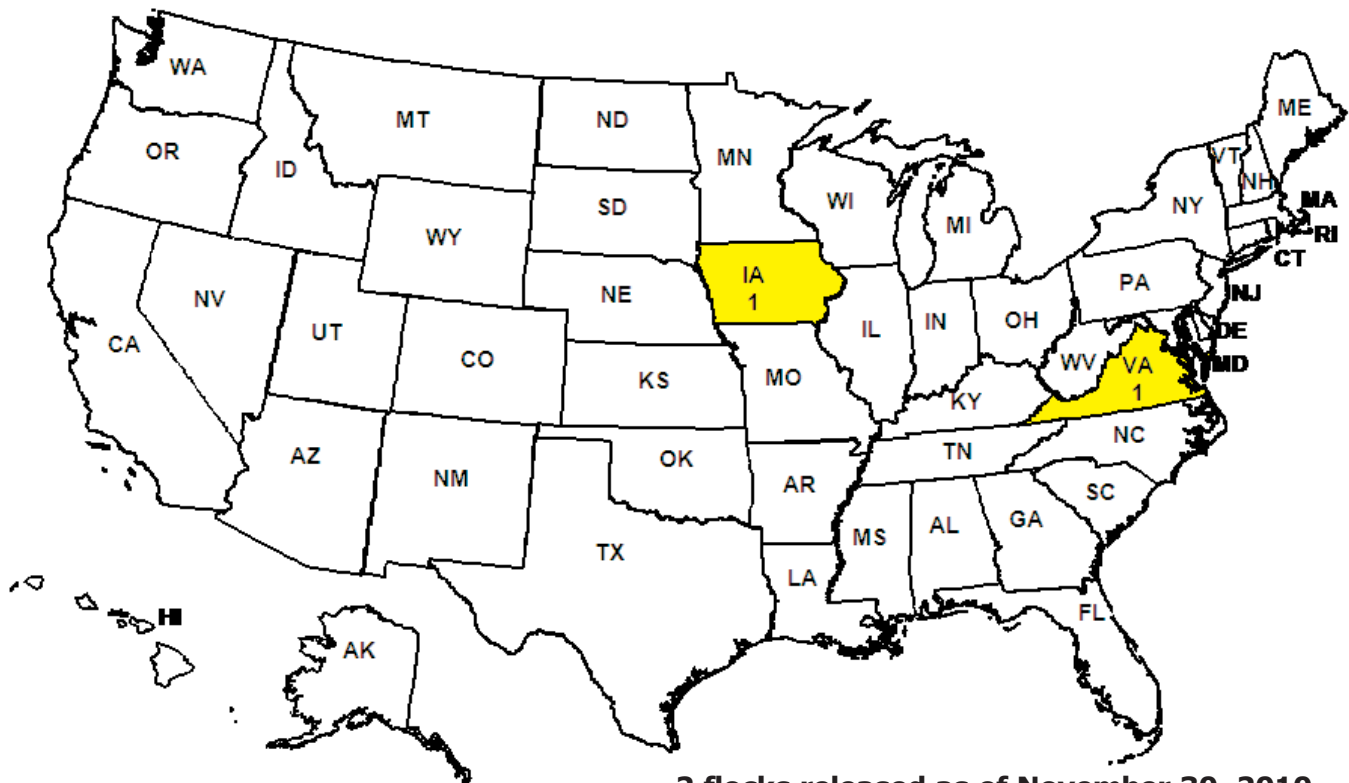


Classical Scrapie cases = 4;
NOR98-like Scrapie cases = 1;
0 field cases;
5 RSSS cases (reported by State of ID tag. Collected FY 2011 and confirmed as of December 13, 2010.

Note: Field cases include animals from infected source flocks, so the state totals often include several animals from the same flock.

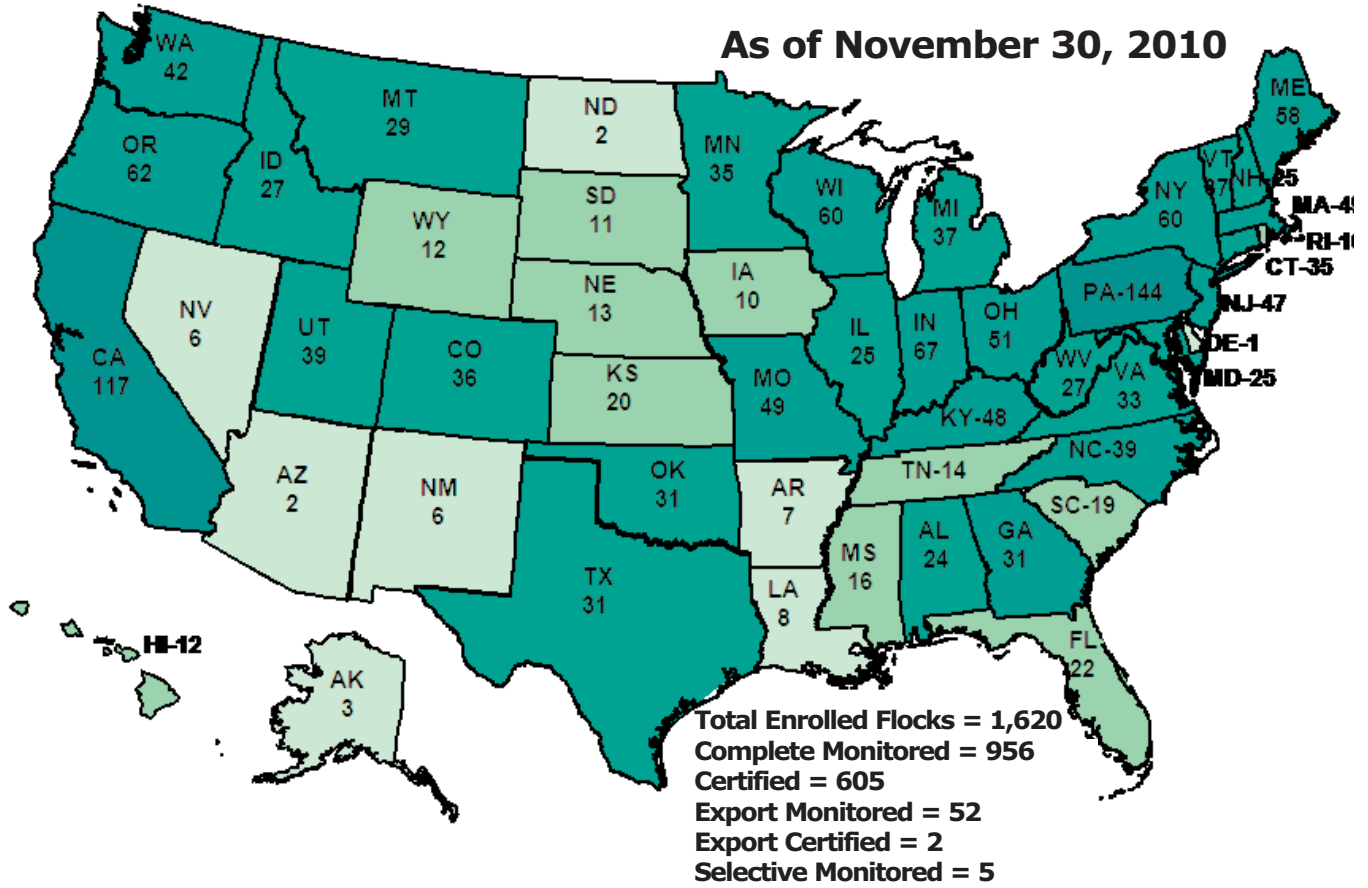
*Nor98-like case

Released Scrapie Infected and Source Flocks FY 2011

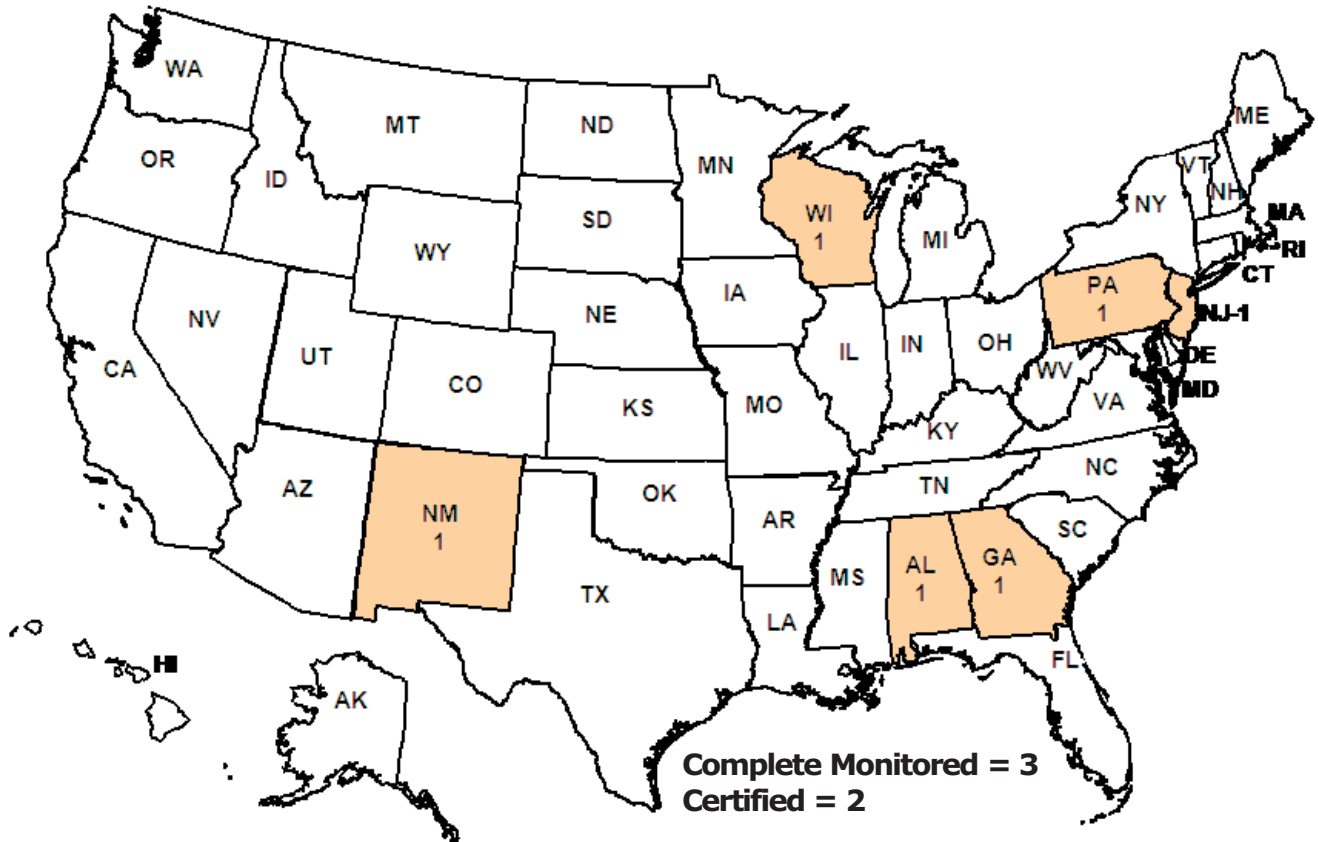


2 flocks released as of November 30, 2010

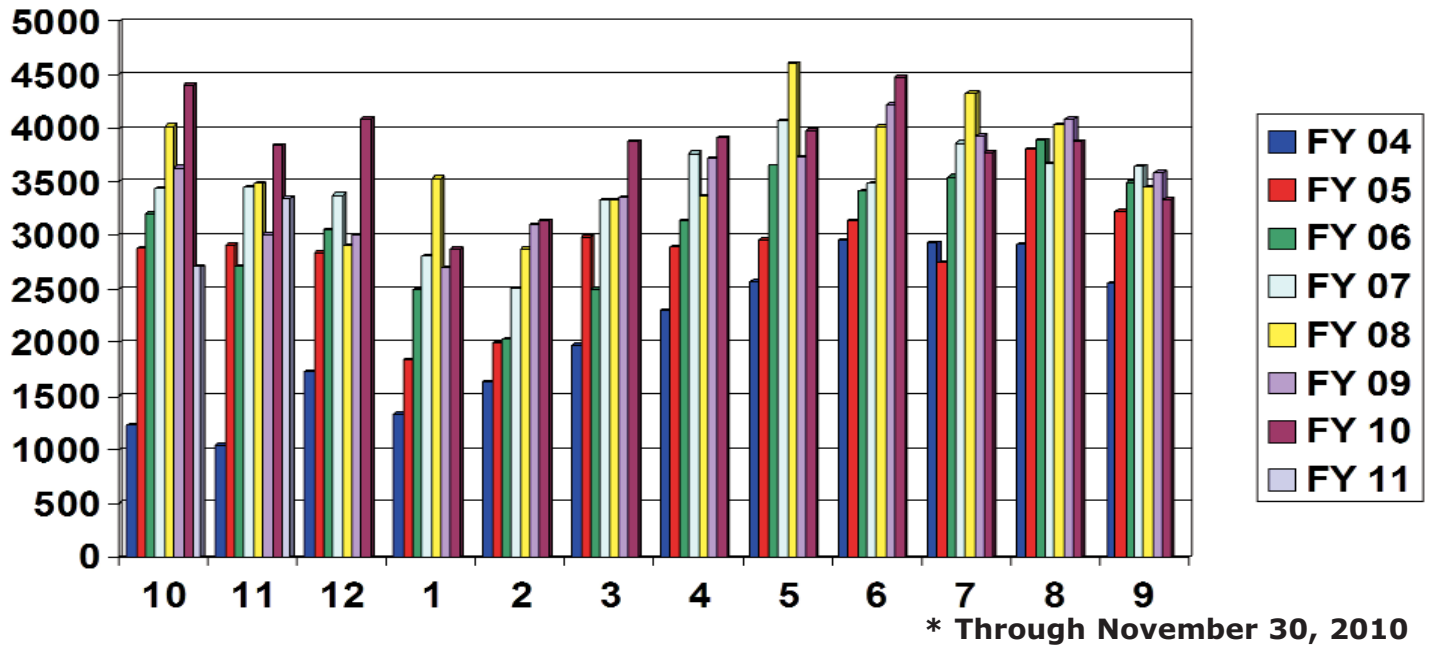
Scrapie Flock Certification Program Participating Flocks



SFCP Flocks Enrolled and Certified in November 2010



Slaughter Surveillance Samples Collected by Month, FY 2004 to FY 2011*



The Animal and Plant Health Inspection Service's goal is to collect 44,000 slaughter surveillance samples each year from throughout the United States.

Regulatory Scrapie Slaughter Surveillance (RSSS) Statistics through November 30, 2010

Since April 1, 2003:	In FY2011:
282,775 samples collected 450 NVSL* confirmed positives	6,053 samples collected 4 NVSL confirmed positives (classical); 1 (Nor98-like)

*National Veterinary Services Laboratories

Web Sites Dedicated to the Eradication of Scrapie

Animal and Plant Health Inspection Service
www.aphis.usda.gov/vs/naahps/scrapie

Maryland Small Ruminant Page
www.sheepandgoat.com/scrapie.html

National Institute of Animal Agriculture
<http://www.animalagriculture.org/scrapie/Scrapie.htm>

Scrapie QuickPlace
<https://qp01.aphis.usda.gov/QuickPlace/scrapie/Main.nsf?OpenDatabase>
State and federal employees can access this password-protected site by e-mailing
Earl.T.Thorpe@APHIS.USDA.gov to receive a password.



American Sheep Industry Association
www.sheepusa.org